

CEDRA-AVwater™

Water Distribution Applications

Using ESRI's ArcGIS® or ArcView® GIS Software



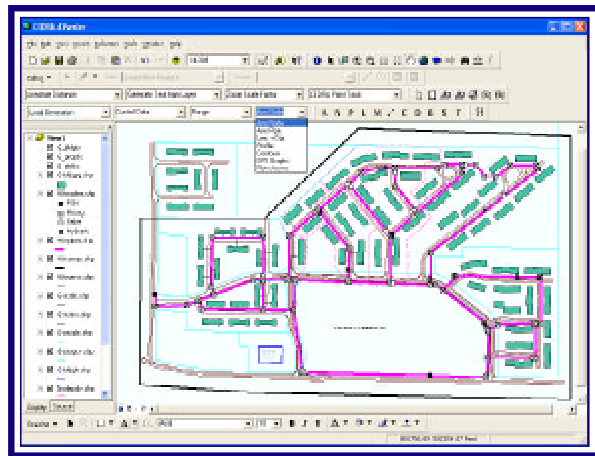
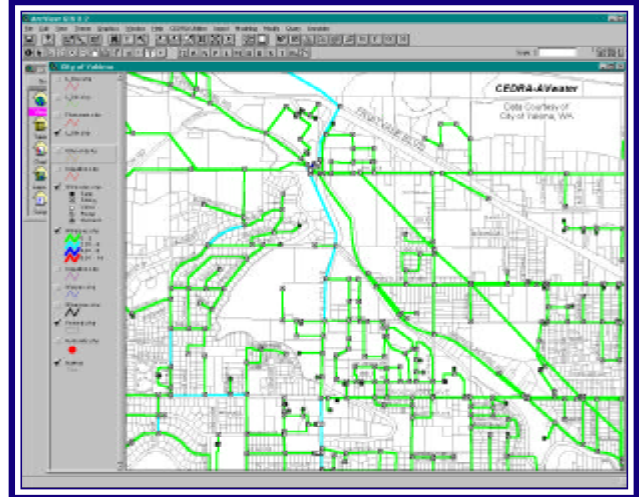
A Productivity Tool For:

Building the database from within AVwater

- Define the geometric configuration.
- Establish the materials inventory.
- Introduce supply and demand loads using flow rates and land use polygons assigned to nodes.

Import/export with existing databases

- Water distribution system information.
- Topographic features.
- Land parcels and Water consumption usage.
- Other ancillary coverages.
- EPANET models and other models.
- dxf, dwg, dgn & Cedra drawings.
- Arc/Info coverages and libraries thereof.

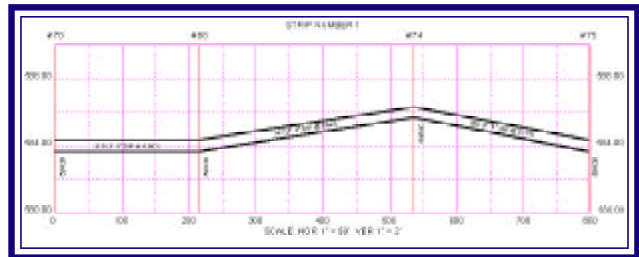


Hydraulic and water quality modeling

- Static and extended period simulation.
- Land Use polygon based contributions option.
- Storage Tanks, Pumps, Pressure regulating/sustaining valves and open/close valve settings.
- Fire Flow Analysis with summary tables.
- EPANET Version 1 interface with unlimited pipes.
- EPANET Version 2 interface with unlimited pipes.

Graphic display and or reports

- Hydraulic and quality charts and tables.
- Pressure, flow and velocity contours.
- Conduit and energy grade line profiles.
- Flow arrow generation.
- Annotation of pipes and nodes.
- CAD functionality.



Database queries

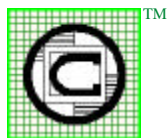
- Hydraulic computational results.
- Inventory features.
- Operational and historic data.

Database editing

- Maintain inventory & hydraulic attributes.
- Precise geometric location.
- Network re-segmentation into smaller nets.
- Node and Pipe Model Attributes.

Contact **The CEDRA Corporation** on how to order:

CEDRA-AVcad™ for general feature editing, annotation and CAD tools, **CEDRA-AVcogo™** for comprehensive COGO tools, **CEDRA-AVland™** for roadway and site engineering, **CEDRA-AVparcel™** for parcel mapping and maintenance, **CEDRA-AVsand™** for sanitary, storm and combined sewer modeling, **CEDRA-AVwater™** for water distribution and quality modeling, **CEDRA-DataEditor™** for data entry and maintenance, **CEDRA-DxfExport™** for DXF file exporting.



The CEDRA Corporation

Total CADD for Engineers™
Bridging Engineering and GIS™

1600 Moseley Road - Suite 500
Victor, New York 14564

Phone: 585-414-6541
Fax: 585-924-8614

E-mail: cedra@cedra.com
URL: <http://www.cedra.com>



**AUTHORIZED ESRI
DEVELOPER
and
RESELLER**



Copyright © 2017 The CEDRA Corporation. The CEDRA logos, CEDRA 2017, CEDRA-AVcad, CEDRA-AVcogo, CEDRA-AVparcel, CEDRA-AVland, CEDRA-AVsand, CEDRA-AVwater, CEDRA-DataEditor and CEDRA-DxfExport are trademarks of The CEDRA Corporation. All World Rights Reserved. ArcView® GIS, ArcGIS and ArcMap are trademarks of Environmental Systems Research Institute, Inc. All World Rights Reserved.

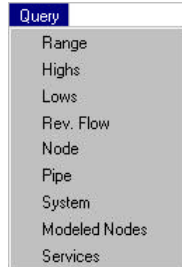
Printed in U.S.A. Design: TGD

THE CEDRA-AVwater™ MENUS

Modify Features



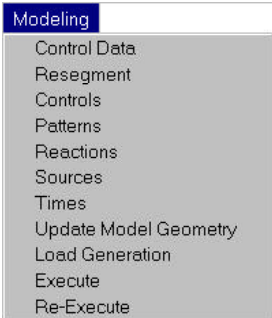
Query Attributes



Annotate Graphics



Modeling Controls



POINT TOOLS

- Establish Points**
- of known coordinates
 - with direction & distance
 - with plus and offset



THE CEDRA-AVwater™ VIEW DOCUMENT BUTTONS

UNITS OF MEASURE

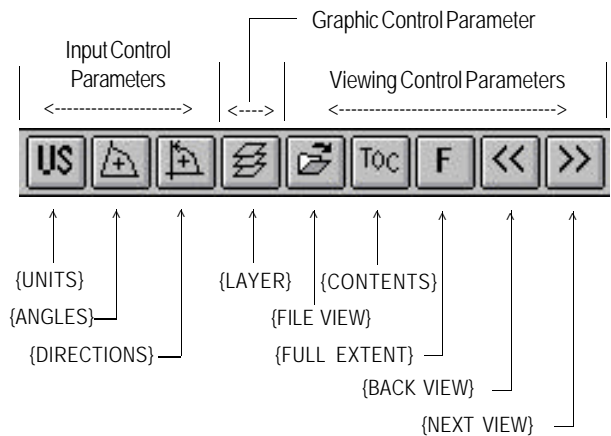
- US** U.S. standard units
- SI** S.I. units

POSITIVE ANGLES

- Left angle is (+)
- Right deflection is (+)
- Left deflection is (+)
- Right angle is (+)

DIRECTIONS

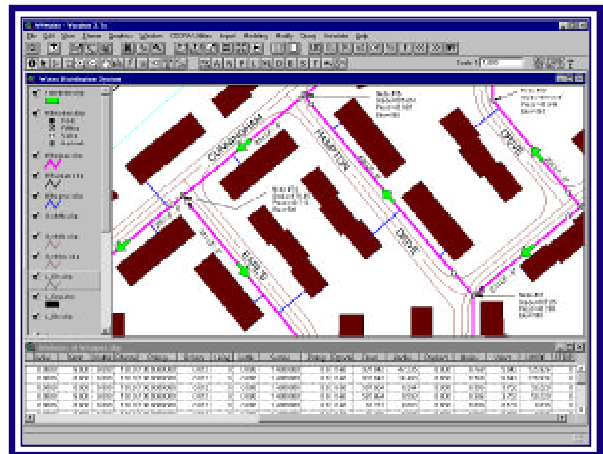
- North azimuths
- Bearings
- Cartesian rotations



MODIFY TOOLS

MODIFY NODES/PIPES

- M** Modify nodes and pipes
- [Move]** Move a node and its pipes
- C** Change a node type



THE CEDRA-AVwater™ VIEW DOCUMENT TOOLS



- Point Tools
- Service Area Tool
- Node Definition Tool
- Pipe Definition Tool
- Load assignment Tool
- Node and Pipe Modification, and Move Node Tools
- Node and Pipe Deletion Tool
- Break a pipe tool
- Define water main strips for profiling
- Assign polygon based loads to nodes
- Dimensioning Tool
- Translation, Rotation and Scaling Tool